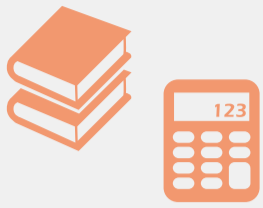


AN EMPIRICAL PORTRAIT OF NEW ZEALAND ADULTS LIVING WITH LOW LITERACY AND NUMERACY SKILLS

570 000



New Zealanders

Over half a million adult New Zealanders live with low literacy and/or numeracy skills.

DATA SOURCES

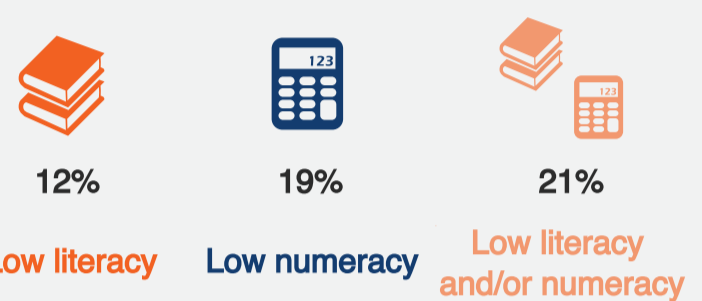


The Programme for the International Assessment of Adult Competencies (PIAAC), gathers data on proficiency in literacy and numeracy of the population aged 16 to 65 years. The PIAAC sample is representative of the New Zealand working-age population.



The Integrated Data infrastructure (IDI) is a large research database containing microdata about individuals and households. It has a wealth of data from a range of government agencies. We focus on health data sourced from Ministry of Health and justice events from the NZ Police.

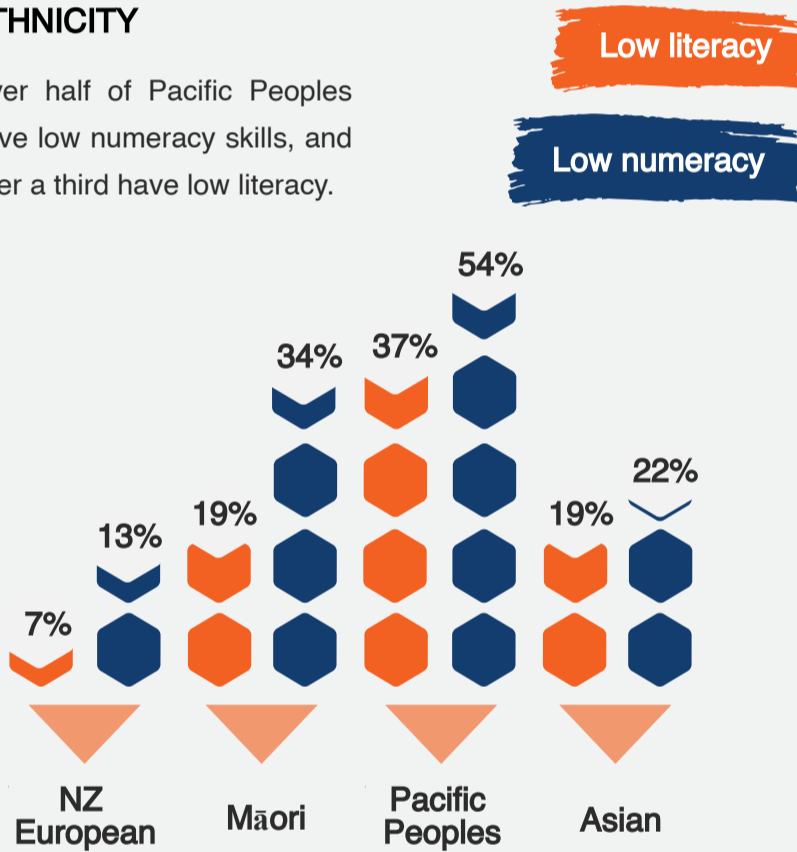
In this research, low skills are defined as scoring at or below Level 1 in the PIAAC proficiency levels, which range from 1 to 5.



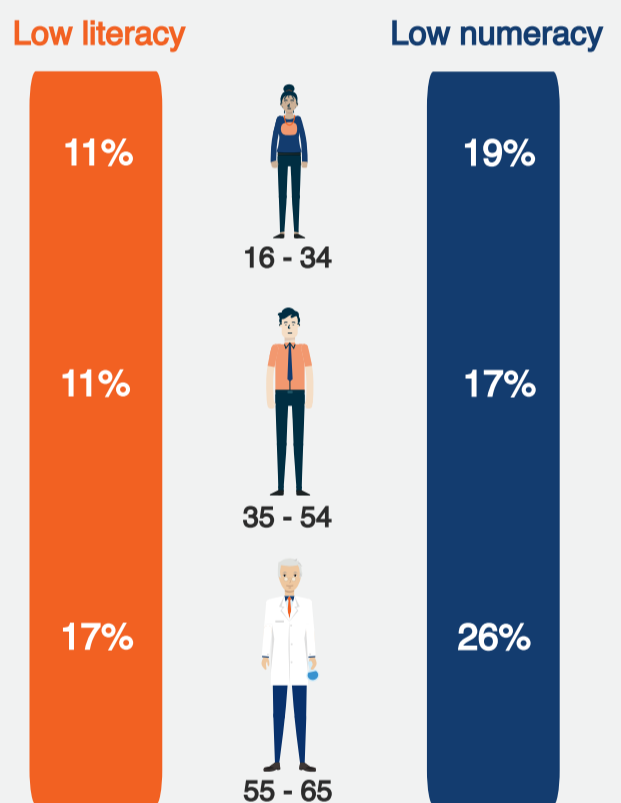
21% of working-age New Zealanders have either low literacy or numeracy proficiency, or both. There is a large overlap between those with low literacy and those with low numeracy.

ETHNICITY

Over half of Pacific Peoples have low numeracy skills, and over a third have low literacy.



AGE



HEALTH

Low

19% Referral for mental health services

63% Non-admitted ED visits



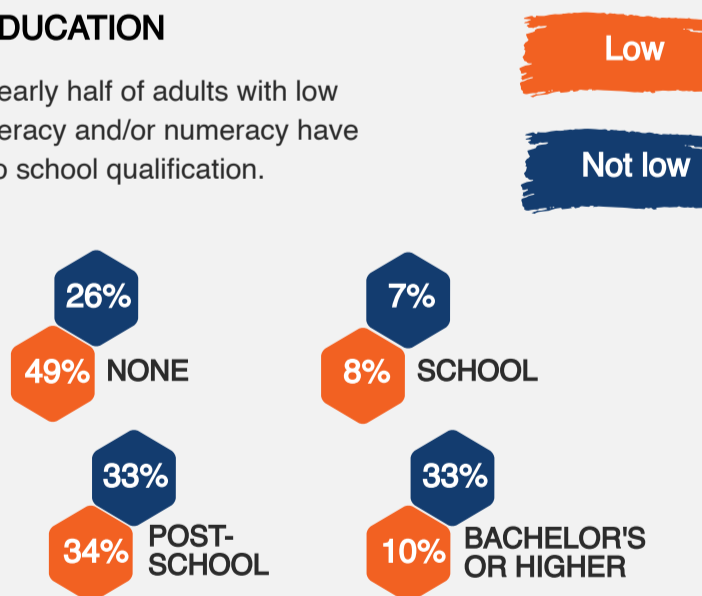
Not low

12% Referral for mental health services

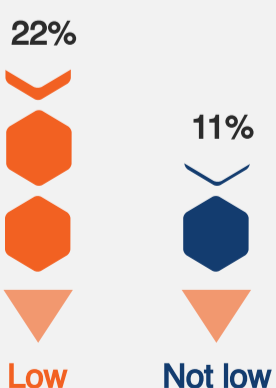
53% Non-admitted ED visits

EDUCATION

Nearly half of adults with low literacy and/or numeracy have no school qualification.

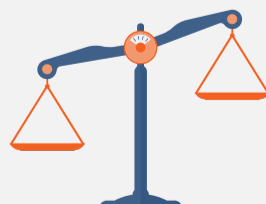


ALLEGED OFFENDER



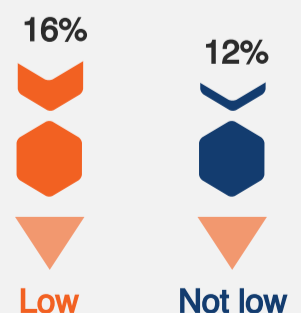
Adults with low literacy and/or numeracy were more likely to:

Be investigated for a crime.



Be an alleged victim of a crime.

ALLEGED VICTIM



These results are not official statistics. They have been created for research purposes from the Integrated Data Infrastructure (IDI) which is carefully managed by Stats NZ. For more information about the IDI please visit <https://www.stats.govt.nz/integrated-data/>.