



Providing high quality research across a broad multidisciplinary programme
concerned with people and work



**NEW ZEALAND
WORK RESEARCH INSTITUTE**



NZWRI IN NUMBERS

NZWRI is a knowledge hub with a network of local researchers and global collaborators.



Established in
2008



10
research themes



≈ \$1 million
in external research income



12 advisory board members from
government, business and the
community.



90+ international
research associates



6 specialist research
groups

>30 seminars,
conferences and
professional
engagements
per year



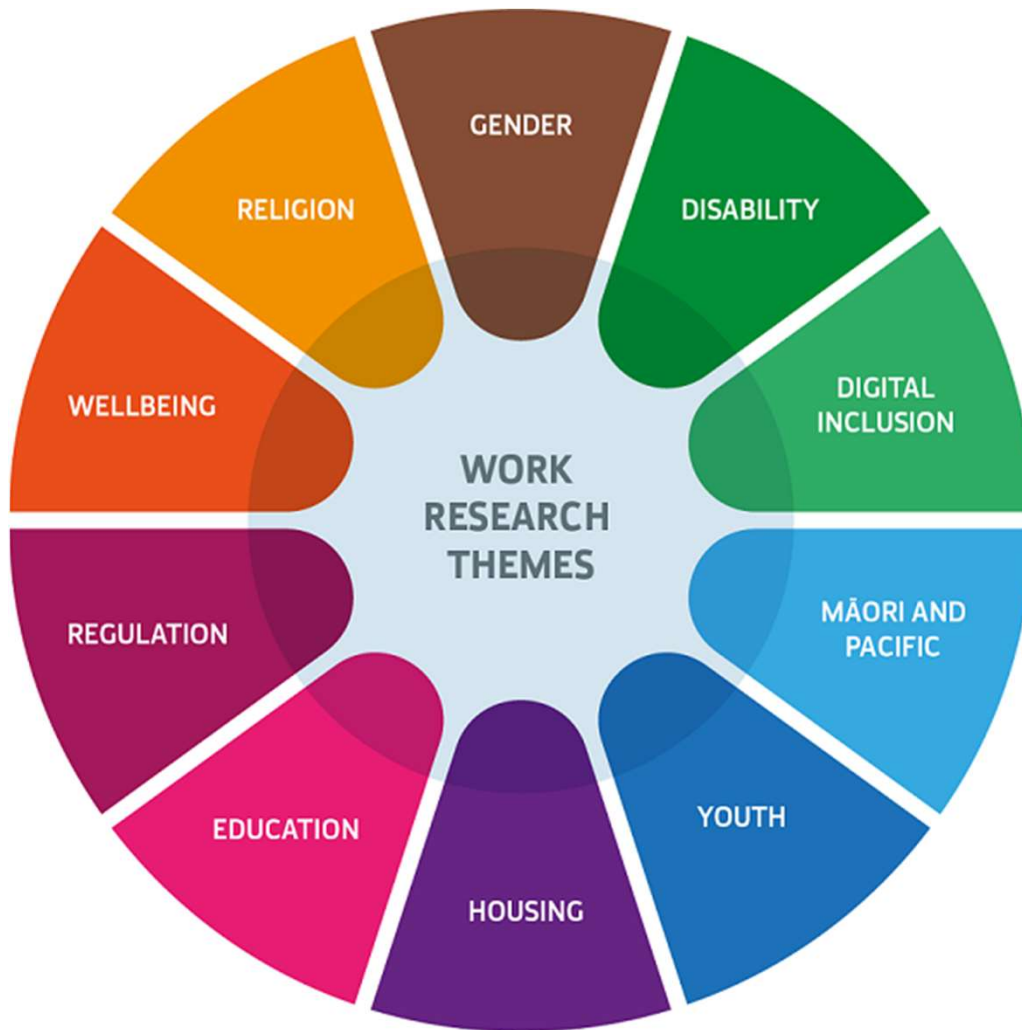
70+ research
experts



Who are we...

- Director (Gail Pacheco)
- Deputy Director (Jarrod Haar)
- 3 post doctoral research fellows (recruited from the U.S. and Germany)
 - Kabir Dasgupta
 - Alex Plum
 - Chris Erwin
- A research developer – Mary Hedges
- Office manager – Tamara Tesolin
- Office administrator – Livvy Mitchell
- Numerous research assistants / officers co-opted in for varying lengths and for particular projects
- Other staff bought out of teaching when circumstances arise

Our Themes



Our Goals

- Development of research excellence in our specialist research areas
- Production of knowledge to support development of public policy and organisational practice
- Hub for NZ research and engagement activity across our specialist research areas
- Engagement with industry and other external stakeholders

Our Strengths

Primary Surveys



World Internet Project



NZ Aged Care Workforce Survey



UN Women's Empowerment
Principles Survey

Big Data



Empirical evidence of the gender
pay gap in New Zealand



Residential movement in New
Zealand: Quantifying and
characterising the transient
population

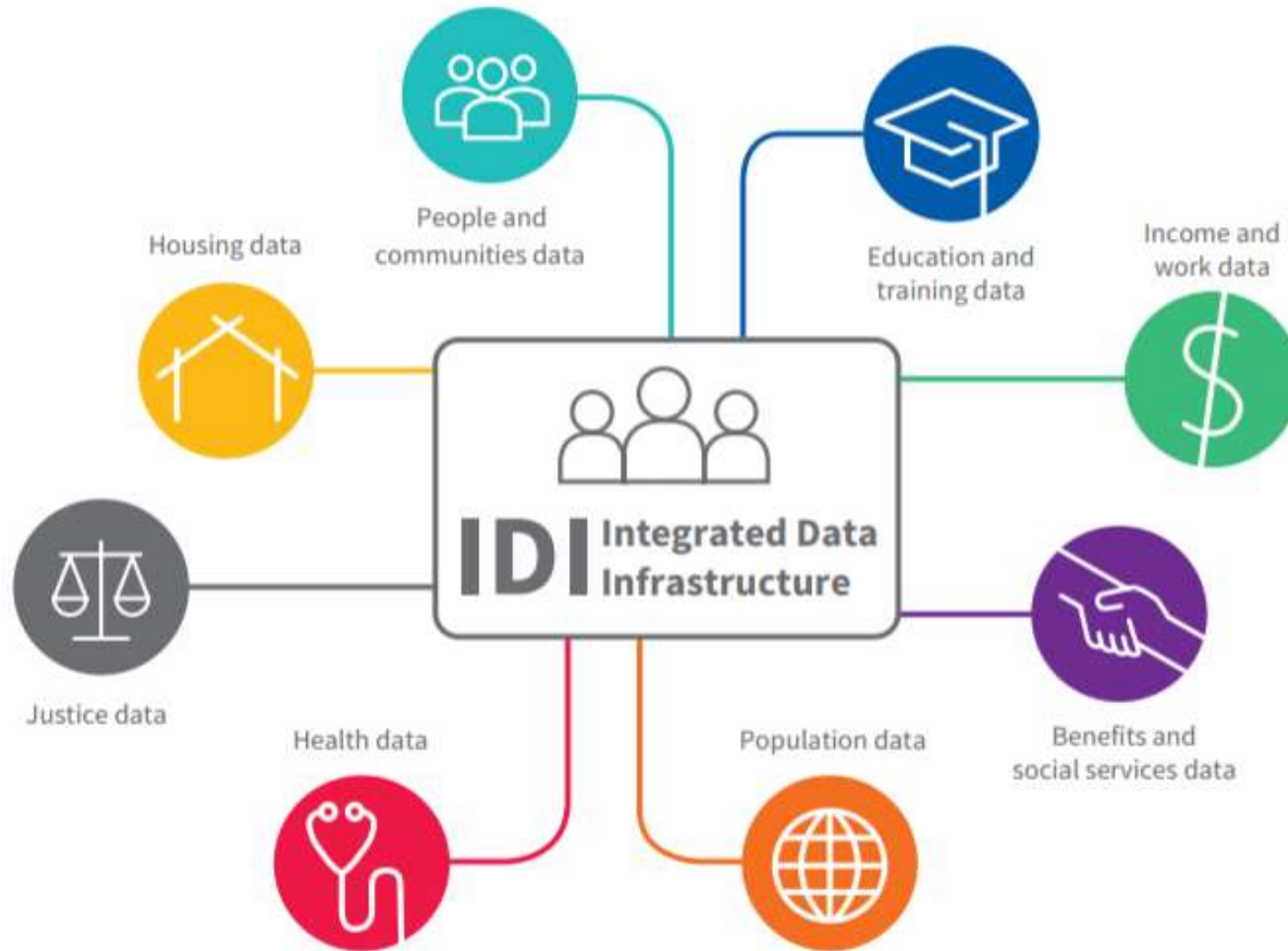


Explaining ethnic disparities in
bachelor's qualifications:
participation, retention and
completion in New Zealand



Cost of being Y-NEET

Big Data – The IDI



Health data

- B4 School Checks – from 2011
- Cancer registrations – from 1995
- Chronic conditions – from 2007
- General medical services claims – from 2002
- Health tracker – 2006-2013
- Laboratory claims – from 2003
- Mortality – from 1988
- Immunisation – from 2006
- National non-admitted patient collection – from 2007
- Pharmaceuticals – from 2005
- PHO enrolments – from 2003
- Population cohort demographics and addresses – from 2004
- Mental health and addition – form 2008
- Publicly funded hospital discharges – from 1998
- National Needs Assessment and Service Coordination Information System (SOCRATES)

Education and training data

- Early childhood education participation – from 2008
- Primary education – from 2007
- Secondary education – from 2004
- Tertiary education – from 1994
- Industry training – from 2001
- Targeted training – from 2001

Benefits and social services data

- Benefits – from 1990
- Youth services – from 2004
- Children's action Plan – from 1996
- Working for Families – from 2003
- Child, Youth and Family – from 1991
- Student loans and allowances – from 1992
- ACC Injury claims – from 1994

Justice data

- Recorded crime: offenders – from 2009
- Recorded crime: victims – from 2014
- Court charges – from 1992
- Sentencing and remand – from 1998

People and communities data

- Auckland City Mission – from 1996
- Migrant Survey – from 1997
- Driver licence and motor vehicle registers
- Longitudinal Immigration Survey of NZ – 2005-2009
- General Social Survey – 2008-2014

Population data

- Border movements – from 1997
- Visa applications – from 1997
- Departure and arrival cards – from 1997
- 2013 Census
- Births, deaths, marriages and civil unions – from 1840

Income and work data

- Tax and income – from 1999
- NZ Income Survey – from 2006
- Household Labour Force Survey – from 2006
- Survey of Family, Income and Employment (SOFIE) – 2002-2010
- Household Economic Survey – from 2006

Housing data

- Tenancy – from 2000
- Social housing – from 1980

Thank you
for your time



**NEW ZEALAND
WORK RESEARCH INSTITUTE**

